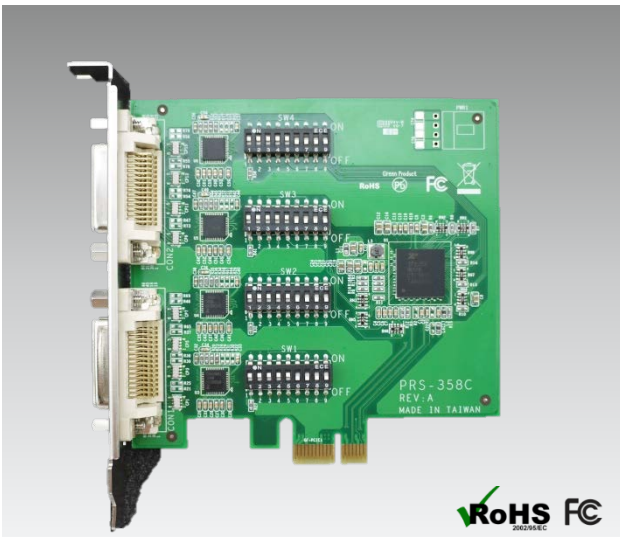


# PRS-358C

## 8 PORT RS232/422/485 PCI EXPRESS SERIAL COMMUNICATION CARD



### Main Features

- PCI Express bus 2.0 compliant
- Support 8 port switchable RS232/RS422/RS485
- Max Data Rate of 20Mbps in RS-485/422 Modes and up to 1Mbps in RS-232 Modes
- XR17V358 UART with 256-byte FIFOs
- 16550 compatible register Set
- Supports Windows XP/7/10, and Linux operating systems
- Industrial design, manufactured in Cadmus Taiwan

### Product Overview

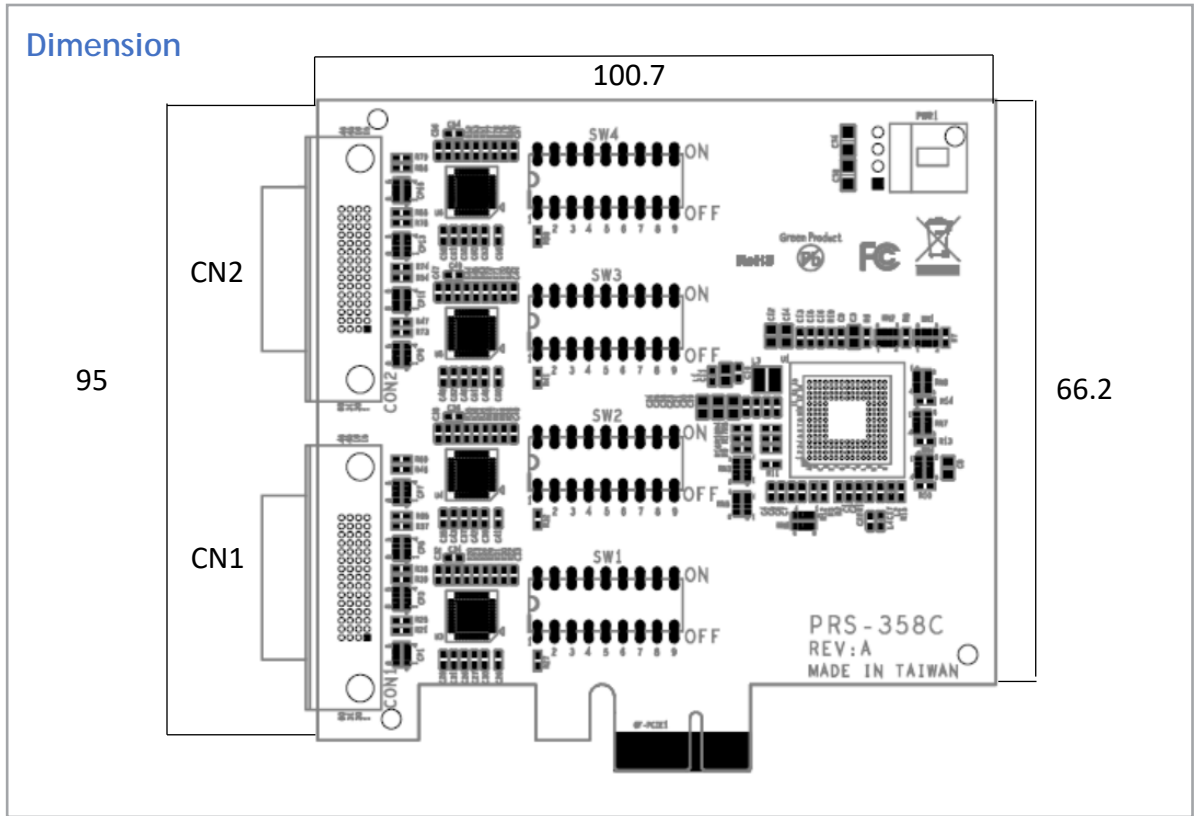
The PRS-358C PCI Express 8-port serial I/O card is a high-speed serial I/O expansion card for PCI Express bus. Connecting to a PCI Express bus on your computer, the PCI Express 8-port serial I/O card instantly adds eight serial I/O communication ports to your system.

Featuring high data transmission speeds (Max Data Rate of 20Mbps in RS-485/422 Modes and up to 1Mbps in RS-232 Modes) and high-performance XR17V358 UARTs with 256-byte FIFOs to reduce CPU load, provide high efficient solution for serial data communication and industrial automation applications. Support automatic RTS/CTS or DTR/DSR hardware flow control with programmable hysteresis.

### Specifications

Module Name	PRS-358C
Bus Type	PCI-Express x1
Input interface	PCI Express 2.0
Output Interface	Switchable RS232(support Tx, Rx, Gnd.)/422/485 x 8 port one 9 pin switch can control 2 port COM port
Output Connector	Two LFH connector
Comm. Controller	XR17V358
Dimensions	107 X 95 (mm)
Data Rate	Max. Data Rate of 20Mbps in RS-485/422 Modes and up to 1Mbps in RS-232 Modes
Compatible Operating System	Windows XP
	Windows 7
	Windows 10
	Linux
Working Temperature	-40°C-85°C

## Dimension



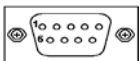
## Pin definition

### SW1 ~ SW4

SW1	COM1	1	2	3	4	5	6	7	8	9
	COM2	RS232	OFF	OFF	OFF	OFF	OFF	ON	ON	ON
RS485	ON	ON	ON	OFF	OFF	OFF	OFF	OFF	ON	ON
RS422	ON	ON	ON	ON	ON	ON	OFF	OFF	OFF	OFF

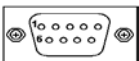
**SW1** : COM1 and COM2    **SW2** : COM3 and COM4    **SW3** : COM5 and COM6    **SW4**: COM7 and COM8

### RS232



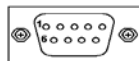
Pin	RS232 Signal Name
1	DCD, Data carrier detect
2	RXD, Receive data
3	TXD, Transmit data
4	DTR, Data terminal ready
5	GND, ground

### RS422



Pin	RS422
1	TX-
2	TX+
3	RX+
4	RX-
5	GND

### RS485



Pin	RS485
1	DATA-
2	DATA+
3	
4	
5	GND

## Ordering Information

### PRS-358C

- PCI Express x1 interface to 8 port RS232/422/485
- With two 60 pin LFH connector to 4\*DB9 cable, L:15 cm

### Front view

